

## Forex EA Robot based on Alligator x Candle Stick Formation

This MT5 Expert Advisor combines multi-timeframe candlestick pattern analysis with fundamental event filtering to execute trades with disciplined risk management. Key features:

### 1. Core Strategy

Price Action Focus: I want a Robot that Relies solely on candlestick patterns (pin bars, engulfing, hammers/shooting stars) across multiple timeframes for trade signals. I want a situation where once I put the robot on the chart, the robot will generate signal based on AI Integrated signal. The robot will integrate **Alligator** indicator as the main core indicators + additional trading strategies. Once the robot has generated a signal either for **BUY, STRONG BUY, NEUTRAL SELL, STRONG SELL** Signals on high timeframe, it will execute on lower timeframe.

If I put the robot and it generates Buy signal and the number of trades to open then it will open buy in that particular direction. That is if I put the robot on the chart to buy, number of trades to open 2 and chose the M15 time frame then if at the end of the candle it is still a bullish candle then the robot should open 2 buy positions since both H4 and M15 confirms a buy signal. The robot will open buy signal again with the same lot size, same number of trades if the next candle is still bullish, and it will keep on buying until when the next candle is bearish. If the alligator is still bullish and we get a bearish candle stick, it will wait until we get bullish candle stick the open trades again. The exit will be determined by alligator cross over and order block exit strategy

### 2. Timeframe Analysis and Execution Strategy

#### **Multi-Timeframe Analysis:**

Higher timeframes (Weekly, Daily, H4, H1) for analyzing trends.

Lower timeframes (H4, H1, M30, M15, M5) for executing trades.

#### **Execution Based on Trend Confirmation:**

A trend observed on a higher timeframe must be verified on a lower timeframe before entry. For instance:

W1 trend confirms on H4.

D1 trend confirms on H1

H4 trend confirms on M30

H4 trend confirms on M15

H1 trend confirms on M5.

### 3. News Filter

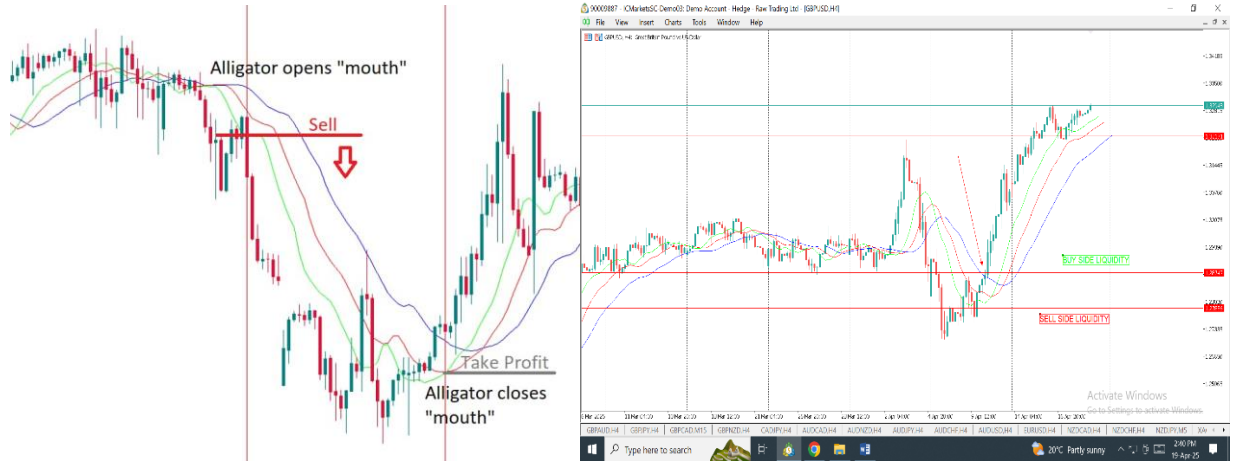
Pre-Event Shutdown: Closes all positions 15 minutes before high-impact news events (GDP, NFP, CPI).

Volatility Avoidance: Prevents new trades during scheduled high-risk periods.

**EA OPERATIONAL IDEOLOGY**

**Creates EA that Trade only in the direction of the trend (defined by Alligator + Order Blocks)** and add some additional supporting indicators (like RSI or MACD) to act as confirmations, similar to how Investing.com gives a "summary."

## 1. Entry and Exit Criteria



### Entry Signals:

For Buy Direction: ➡

Alligator lines are bullish (Lips > Teeth > Jaw)

Spread is below MaxSpread

Within StartTime and EndTime

If all conditions are met at the close of a candle, open the number of buy trades specified in the parameter.

If a bearish candle forms, pause and wait for a bullish signal again.

For Sell Direction: ➡

Alligator lines are bearish (Lips < Teeth < Jaw)

Same logic as buy, but for sell direction

## EXIT

Our EA will have Four types of Exit:

### 1. SL EXIT

SL is below/Above or green line (magic stops)

### 2. ORDER BLOCK EXIT

### 3. RISK REWARDS EXIT

### 4. TRAILING STOPS EXIT

If the Market Respect. The Next Exit is when the market touch/Crosses the blue Line moving to the opposite direction (Trend). Positions close automatically upon hitting specified take profit or stop loss levels.

---

Plan with Alligator as the Main Character

Alligator Indicator Basics:

Jaw (Blue line) = SMMA(13), shifted 8 bars

Teeth (Red line) = SMMA(8), shifted 5 bars

Lips (Green line) = SMMA(5), shifted 3 bars

#### Signal Logic:

Alligator = Main Trend Filter

❖ Bullish Trend: Lips > Teeth > Jaw and lines are diverging

Buy Signal: Lips > Teeth > Jaw (bullish alignment) + All lines spreading apart

❖ Sell Signal: Lips < Teeth < Jaw (bearish alignment) + All lines spreading apart

Bearish Trend: Lips < Teeth < Jaw and diverging

❖ Neutral: Lines tangled (Sleeping Alligator)

Sideways/Neutral: Lines intertwined or very close together



This way, we'll:

Trade only in the direction of the trend (defined by Alligator)

Avoid noise and bad setups (thanks to confirmation from multiple indicators)

## 1. Output Signal

### THE ROBOT SHOULD DISPLAY:

Bot Name: ' Allie-Pro

Open trades, Number of wins/losses for the day) Overall gain or Lost pip

Pause/Resume Bot buttons (On the interface)

Summary signal on the chart

Feed the result into an EA to place trades

Expiry Date

.....